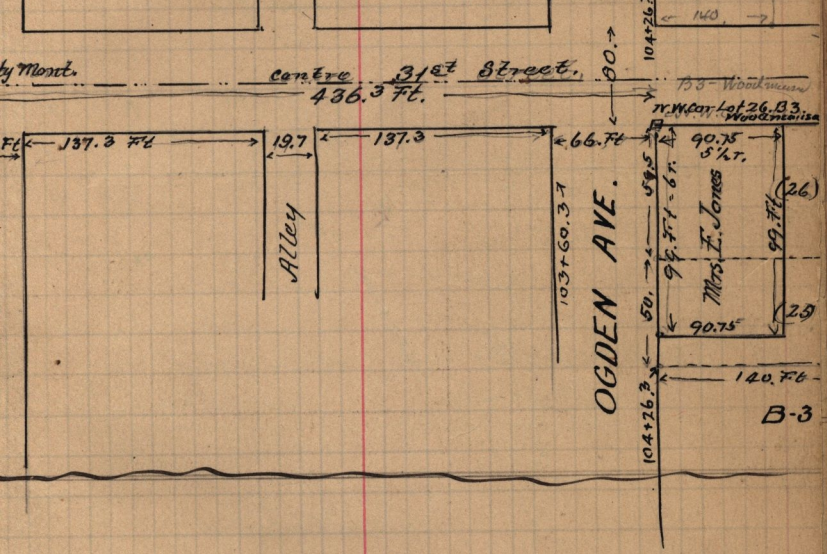


page 32 Charles Heberer to Mrs. Eliza Jones,
Dec. 31-1892, Pt. Lots 25-26. B3, Woodmansee,
Maine Str. Add. to Ogden, Beg. N.W. cor. Lot 26,
S. 6 r. E. 5 1/2 r. N 6 r. W 5 1/2 r. to Beg.

Surveyed for Mrs. E. Jones. at request
of W. I. Tuttle - JAN. 27. 1893.



John Saltenberger to Maggie Bridges, - Pt Lot 1. B 17. P.C. OCS
Beg. S.W. Cor. Lot 1, E. 75 ft., N 8 r., W. 75 ft. S 8 r. to beg.

Surveyed Jan'y 28-1893, Fees \$3.00

at request of Stephens Prows (J.N. Bridges Assis)

